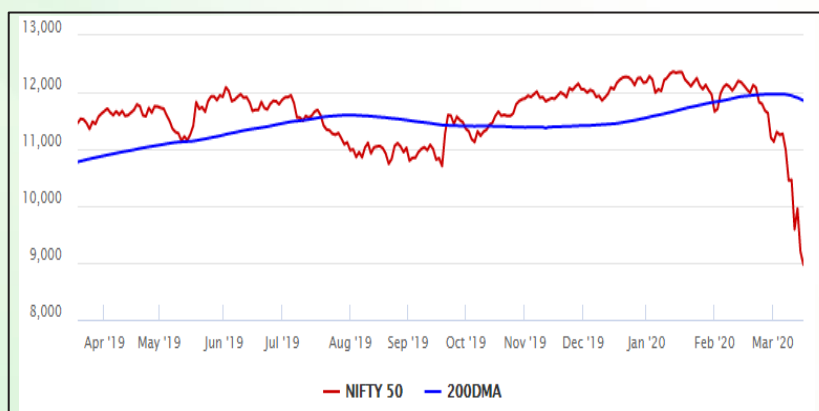


Equity Market

- ❖ Sensex slips 811 points, markets at 3-year low
- ❖ India VIX jumps 6.81% to 62.93
- ❖ Nifty P/E at 20.41, Nifty Midcap 100 P/E at 19.91

S&P CNX Nifty - 200 DMA



Nifty Equity Benchmark Indices

Index	Current Value	%chg	52 wkhigh	52 wklow
Nifty 50	8967.1	-2.50	12430.5	8555.2
Nifty Mid cap 100	13349.7	-2.52	18495.9	12715.0
Nifty Small cap 100	4287.9	-2.96	6822.5	3978.5
Bank	22155.2	-4.10	32613.1	21351.7
Auto	5803.9	-0.68	9059.4	5265.8
FMCG	24929.9	0.90	32644.9	23420.4
Pharma	6979.1	0.28	9578.4	6242.9
Realty	211.0	-2.38	336.4	203.4

Factors driving the market

- ❖ Investors fret over the damage to the global economy on fast spreading coronavirus
- ❖ Yes Bank shares zoom as Moody's upgrades rating and affirms positive outlook
- ❖ FMCG, Pharma the only Nifty index to end in green, Bank stock bleed most

Nifty Top Gainers/Losers

Index	Value	52 wkhigh	52 wklow
Top Gainers			
Yes Bank	59.1	286.0	56.7
HUL	2002.0	2308.2	1650.0
Eicher Motor	16950.0	23450.0	15200.0
Top Losers			
ZEEL	133.0	467.8	131.6
IndusInd Bank	603.1	1834.4	551.1
ICICI Bank	367.0	552.2	364.0

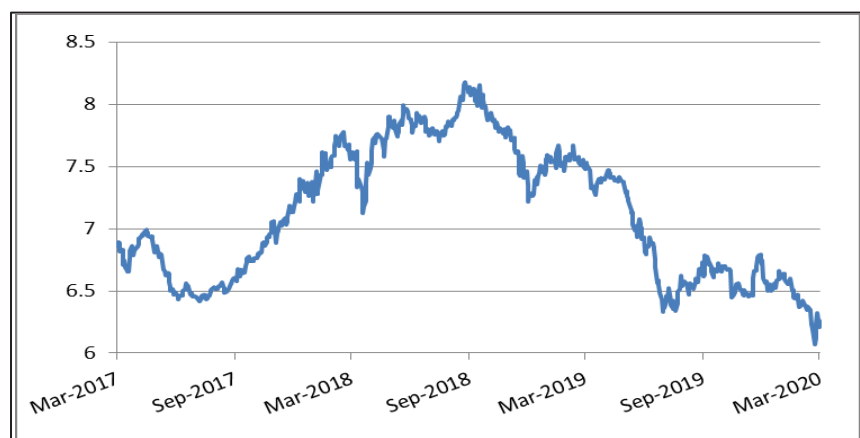
Equity FPI Inflows

Date	Rs Crore		
	Gross Purchases	Gross Sales	Net Investments
17-Mar-20	6968.8	11668.6	(4699.9)
16-Mar-20	8436.6	15177.6	(6741.0)
13-Mar-20	11425.5	13227.6	(1802.1)
Total Feb-2020	127755.2	125935.4	1819.8
Total Jan-2020	116261.5	104139.0	12122.6
Total 2019	1437559.6	1336438.9	101120.8

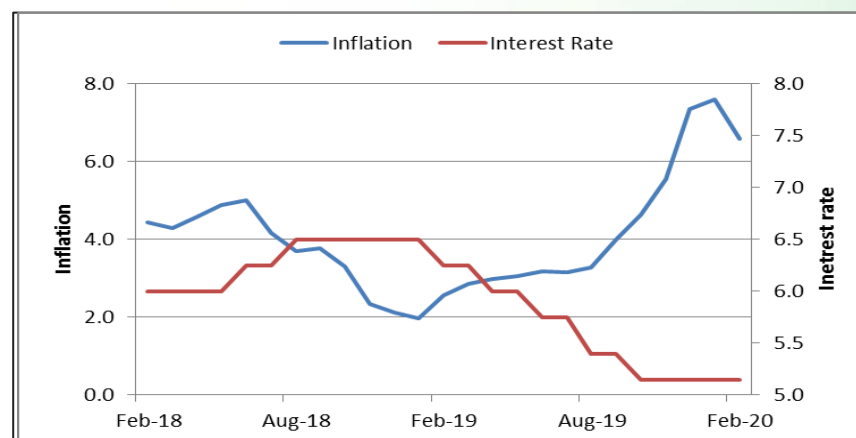
Debt Market

- ❖ Large banks meet to explore ways to lend a helping hand to businesses hit by the Covid-19 outbreak
- ❖ Moody's upgrades Yes Bank rating by a notch, outlook positive
- ❖ 75% airlines set to face liquidity crisis: IATA
- ❖ YES Bank looks to recover Rs 8,500 cr from loan defaulters in next fiscal

10-year G-sec yield



Inflation vs. Interest rate



Debt FPI Inflows

Debt Watch	Percent
Call rate	4.52
Repo rate	5.15
10 Yr Gsec yield	6.27
1-mth CP rate	5.77
3-mth CP rate	5.60
6-mth CP rate	5.60
1 Yr CP rate	6.03
1-mth CD rate	5.14
3-mth CD rate	5.50
6-mth CD rate	5.79
1 Yr CD rate	6.05

Auctions / Money Market Operation		
Date	Description	Amount(Cr)
Mar-18	G-sec auction	--
Mar-18	Total repo (outstanding)	--
Mar-18	Total reverse repo (outstanding)	2,54,348
Mar-18	Marginal standing facility (outstanding)	--
Mar-18	GOI surplus cash balance with RBI	--

Date	Rs Crore		
	Gross Purchases	Gross Sales	Net Investments
17-Mar-20	974.4	12429.0	(11454.6)
16-Mar-20	316.9	6794.8	(6477.9)
13-Mar-20	855.6	3844.3	(2988.8)
Total Feb-2020	48106.3	46009.6	2096.8
Total Jan-2020	25926.9	37574.9	(11648.0)
Total 2019	392458.9	366578.5	25880.4

Debt Fund Benchmark Indices

Market Indices	1 M (%)	1 Yr (%)	3 Yr (%)	5 Yr (%)
Crisil Composite Bond Fund Index	-0.71	11.65	7.97	8.49
Crisil Short Term Bond Fund Index	-0.77	8.73	7.51	8.00
Crisil ST Debt Hybrid 75+25 Index	-7.05	1.12	5.81	6.79
Crisil Liquid Fund Index	0.42	6.47	6.96	7.23

Macro

- ❖ S&P lowers India's growth forecast to 5.2% for 2020 amid Covid-19 pandemic
- ❖ RBI formalises guidelines for regulating payment aggregators, gateways
- ❖ Govt halts three crucial policy initiatives as revenues shrink: Report
- ❖ Airlines, travel agents seek relief as they fly into coronavirus turbulence
- ❖ PE/VC investments in February slips to a 24-month low of \$1.7 bn: Report

	Q3 FY2020(%)	Q2 FY2020(%)	Q3 FY2019(%)
GDP growth	4.7	4.5	6.6

Commodity Prices				
	Current	Week ago	Month ago	Year ago
Brent crude(\$/bbl)	28.62	37.81	57.75	67.15
Gold (RS/10 gms)	39,741	43,427	40,728	31,725

	Jan-2020 (%)	Dec-2019 (%)	Year ago (%) (Jan-2019)
CPI	7.59	7.35	1.97
WPI	3.10	2.59	2.76
Core Sector Output	2.20	1.30	2.10

Global market trends

- ❖ Pakistan cuts key rate by 75 bps citing global slowdown due to coronavirus
- ❖ Rishi Sunak unveils \$400 billion lifeline for UK firms hit by coronavirus
- ❖ US Fed to reintroduce Commercial Paper Funding Facility to boost lending
- ❖ US stocks jump 6% on stimulus hopes
- ❖ Gold extends fall as investors rush to hoard cash

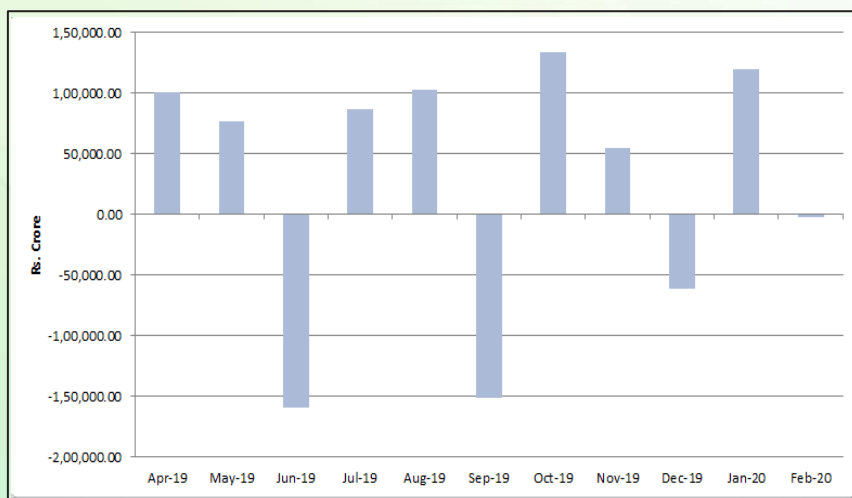
INR vs Global currency		
	Current	Prev close
USD	74.10	73.96
GBP	89.75	89.65
Euro	81.70	81.49
Yen	0.69	0.69
Yuan	10.57	10.55

Global equity benchmark indices returns(%)				
Benchmark	1 Day	1 Week	1 Month	1 Year
FTSE 100	2.79	-11.16	-28.77	-26.75
Hang Seng	0.87	-8.38	-16.80	-19.81
Nikkei 225	0.06	-14.37	-27.68	-20.70
S&P 500	6.00	-12.25	-25.18	-10.39
Shanghai Composite	-0.34	-6.92	-6.51	-7.69

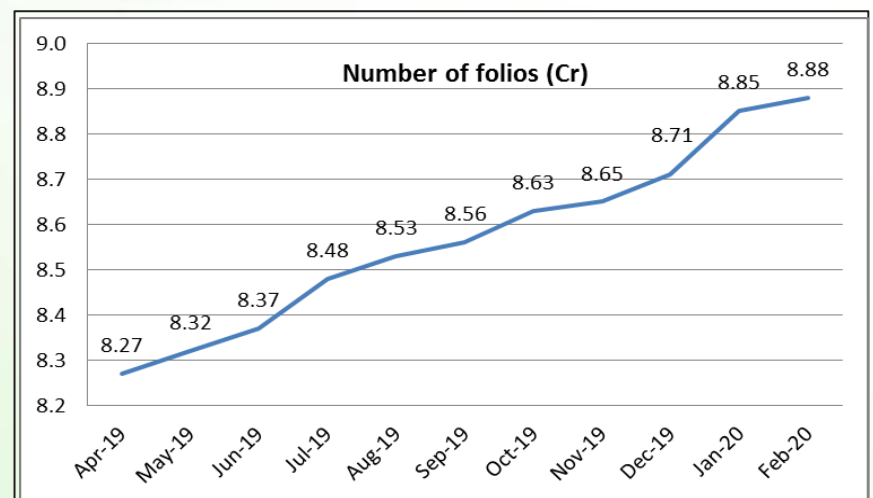
Mutual Fund Roundup

- ❖ Mutual funds to approach Sebi on 3-year lock-in for Yes Bank shareholders
- ❖ Domestic mutual funds continue to buy equities amid market volatility
- ❖ Equity Fund sees net inflows of Rs 10,795 crore, a 11-month high
- ❖ Liquid funds hit with outflows of Rs 43,825 crore

Mutual fund inflows



Mutual fund folio growth



(Data source: NSE, NSDL, FIMMDA, investing.com, tradingeconomics.com, fx-rate.net, ACEMF, AMFI, RBI, equitymaster.com)

(News source: Economic Times, Business Standard)